

Membranous Glomerulopathy

What is membranous glomerulopathy?

Membranous glomerulopathy is a kidney disease that causes protein in the urine (**proteinuria**).

In membranous glomerulopathy, immune deposits are present in the kidney and cause injury.

What are the signs and symptoms of membranous glomerulopathy?

The most common signs and symptoms of membranous glomerulopathy are:

- Protein in the urine (**proteinuria**)
- Swelling of the feet and legs (**edema**)

What causes membranous glomerulopathy?

Some cases of membranous glomerulopathy have no known cause.

Most cases of membranous glomerulopathy have an identifiable cause.

Known causes include:

- Antibodies against the kidney
- Autoimmune diseases (such as lupus)
- Infections
- Medications and illicit drugs
- Tumors

How is membranous glomerulopathy diagnosed?

A **kidney biopsy** is the only way to diagnose membranous glomerulopathy because several other kidney diseases produce similar symptoms and laboratory abnormalities.

Why is it important to diagnose membranous glomerulopathy?

Many kidney diseases cause proteinuria but may differ in treatment from membranous glomerulopathy. A diagnosis of membranous glomerulopathy may allow your doctor to identify the cause in your case.

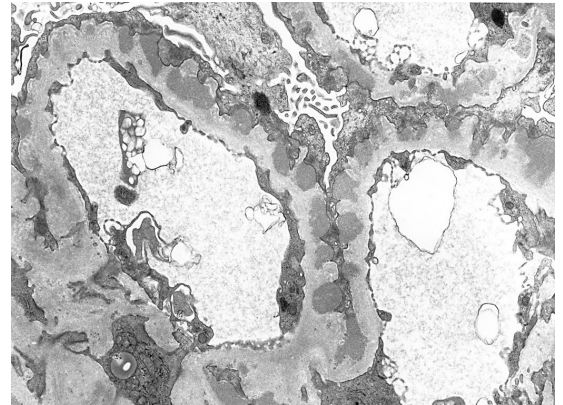
Is additional testing necessary?

Your physician may order tests on urine or blood. Some tests include measuring antibodies against your kidney, like **PLA2R** and **THSD7A**.

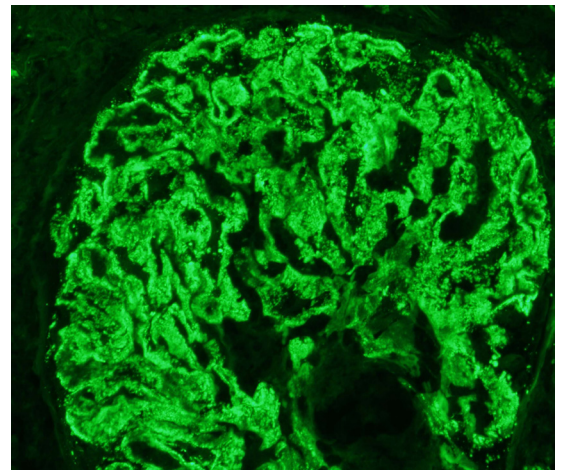
These tests may be used to monitor response to treatment.

What happens to a patient with membranous glomerulopathy?

- Some patients may improve without treatment
- Some patients will respond to treatment
- Some patients will have proteinuria for many years
- Some patients develop renal failure and require dialysis or kidney transplantation



Immune deposits in the kidney biopsy by electron microscopy



Immune deposits in the kidney biopsy